

3050 SERIES

MILITARY GRADE POWER SUPPLY



MIL-STD-704D/E INPUT
 MIL-STD-461D EMI
 MIL-STD-810 ENVIRONMENTS
 MTBF >50,000 HOURS
 55 TO +100° C TEMP. RANGE
 250 KHZ FIXED FREQUENCY
 REMOTE DISABLE
 OVERVOLTAGE

GENERAL SPECIFICATIONS*

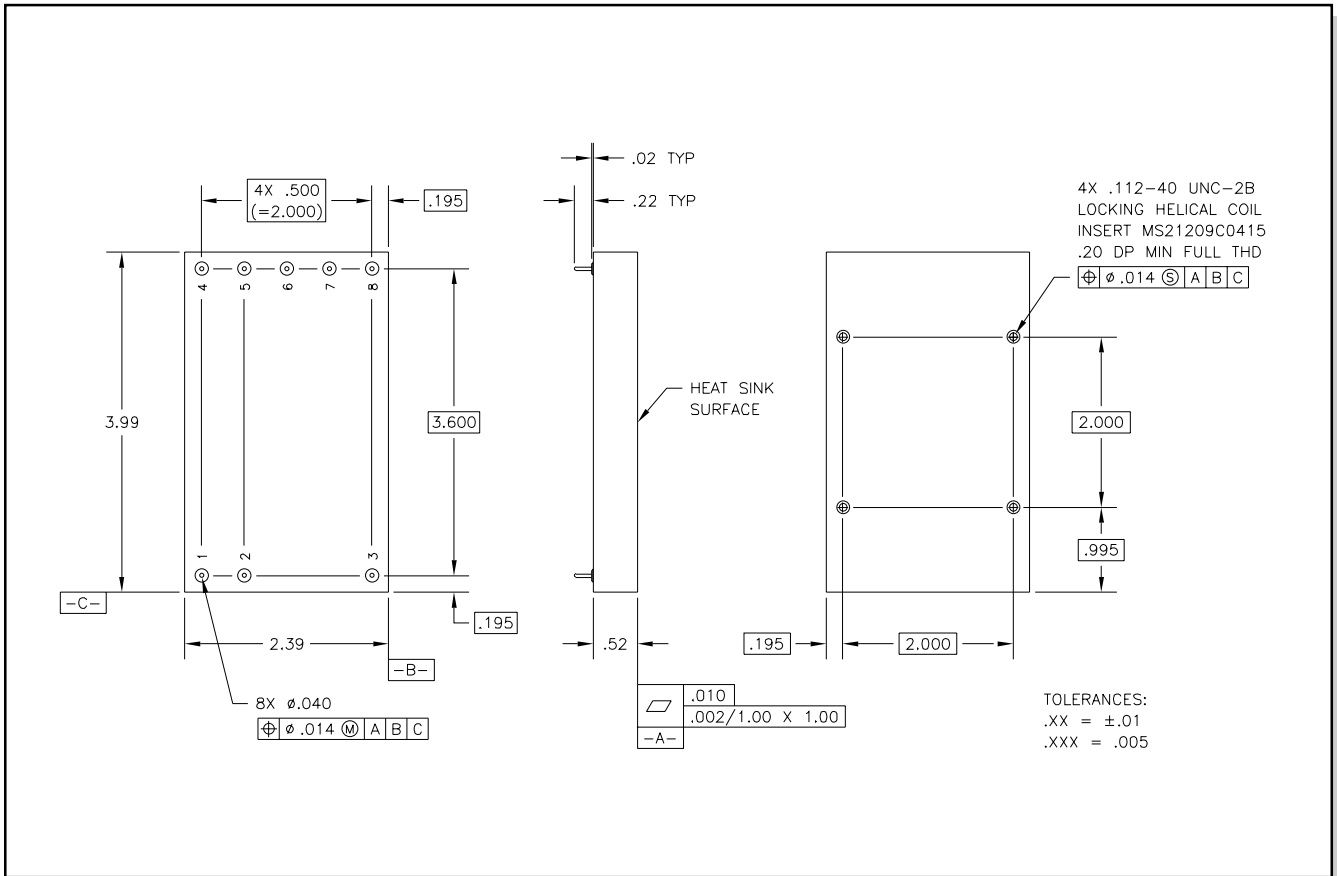
INPUT VOLTAGE 28 VDC, Per Mil-Std-704D/E 50 V, 50 msec, Input Transient	OVER VOLTAGE PROTECTION 130% Overvoltage
ISOLATION Input/Output 100 VDC, 10M Input/Chassis 100 VDC, 10M Output/Chassis 100 VDC, 10M	REGULATION Line (18-32 VDC Input) 0.2% Max. Load (10% to FL) 0.5% Max. Temp. (-55 to +100° C) +/-1.2% Max.
REMOTE SENSE Single Output Models Only	RIPPLE & NOISE Vpk-pk 100mV or 2% Max.
ALTITUDE To 70,000 ft.	TEMPERATURE RANGE -55 to 100° Centigrade Base Plate
OVERCURRENT PROTECTION Continuous On All Outputs Automatic Recovery	CASE MATERIAL Aluminum
	WEIGHT 5.1 Ounces Maximum

PART NUMBER SELECTION GUIDE**

PART NUMBER	# OF OUTPUTS	OUTPUT #1	OUTPUT #2	OUTPUT #3
3050-1105_	1	+5VDC @ 10.0A	N/A	N/A
3050-112_	1	+12VDC @ 4.2A	N/A	N/A
3050-115_	1	+15VDC @ 3.4A	N/A	N/A
3050-212_	2	+12VDC @ 2.1A	-12VDC @ 2.1A	N/A
3050-215_	2	+15VDC @ 1.7A	-15VDC @ 1.7A	N/A
3050-312_	3	+5VDC @ 8.0A	+12VDC @ 0.5A	-12VDC @ 0.5A
3050-315_	3	+5VDC @ 7.0A	+15VDC @ 0.5A	-15VDC @ 0.5A

* See options for suffix ** Consult factory for other voltages and configurations.

OUTLINE DIMENSIONS



OPTIONS: Consult factory for other options.

1. Full military grade components and materials. (S suffix)
2. Military temperature range with hermetic components. (M suffix)
3. Industrial temperature range with nonhermetic components. (I suffix)
4. For other options, including custom performance and interface specifications, contact the factory.

REPRESENTATIVES

Devon Marketing Company
Contact: Rick Guertin

P.O. Box 778
Devon, PA 19333-0778
Phone: (610) 647-5552
FAX: (610) 647-5553

Region(s): Massachusetts,
Connecticut, Rhode Island, E.
Pennsylvania, S. New Jersey,
Maryland

Interactive Component Sales, Inc.
Contact: Bob Roper

4645 Spring Canyon Heights #106
Colorado Springs, CO 80907
Phone: (719) 592-0345
FAX: (719) 592-0350

Region(s): Texas, Florida

KM Communications, LLC
Contacts: Lisa, Kasai, Glenn Mau

3001 Winchester Blvd. Suite #4
Campbell, CA 95008
Phone: (408) 379-1122
FAX: (408) 879-2822

Region(s): Northern California,
Northern Nevada

Ensign Power Systems, Inc.
Contact: Bill Harris

510 East 5th Street
Loveland, CO 80537
Phone: (970) 203-9255
FAX: (970) 203-9322

Region(s): All Others