

# 9012 SERIES

## HIGH RELIABILITY POWER SUPPLY



- MIL-STD-704D/E INPUT
- MIL-STD-461D EMI
- MIL-STD-810 ENVIRONMENTS
- MTBF >50,000 HOURS
- 55 TO +100° C TEMP. RANGE
- 375 KHZ FIXED FREQUENCY
- REMOTE VOLTAGE SENSE

### GENERAL SPECIFICATIONS\*

INPUT VOLTAGE 115 VAC, 400 Hz, 3 Phase, Mil-Std-704D/E	OUTPUT VOLTAGE ADJUSTMENT +/-10% by Potentiometer
ISOLATION Input/Output            1000 VDC Input/Chassis           500 VDC Output/Chassis          500 VDC	REGULATION Line (115 VAC +/-10%)    0.2% Max. Load (2% to FL)           0.4% Max. Temp. (-55 to +100° C)   +/-1.55% Max.
REMOTE SENSE Up to 10% of Output Voltage	RIPPLE & NOISE Vpk-pk (20 MHz BW)      2% Max.
ALTITUDE To 70,000 ft.	TEMPERATURE RANGE -55 to 100° Centigrade Base Plate
OVERCURRENT PROTECTION Continuous, Foldback at Short Circuit Automatic Recovery	CASE MATERIAL Aluminum
	WEIGHT 70 oz. Maximum

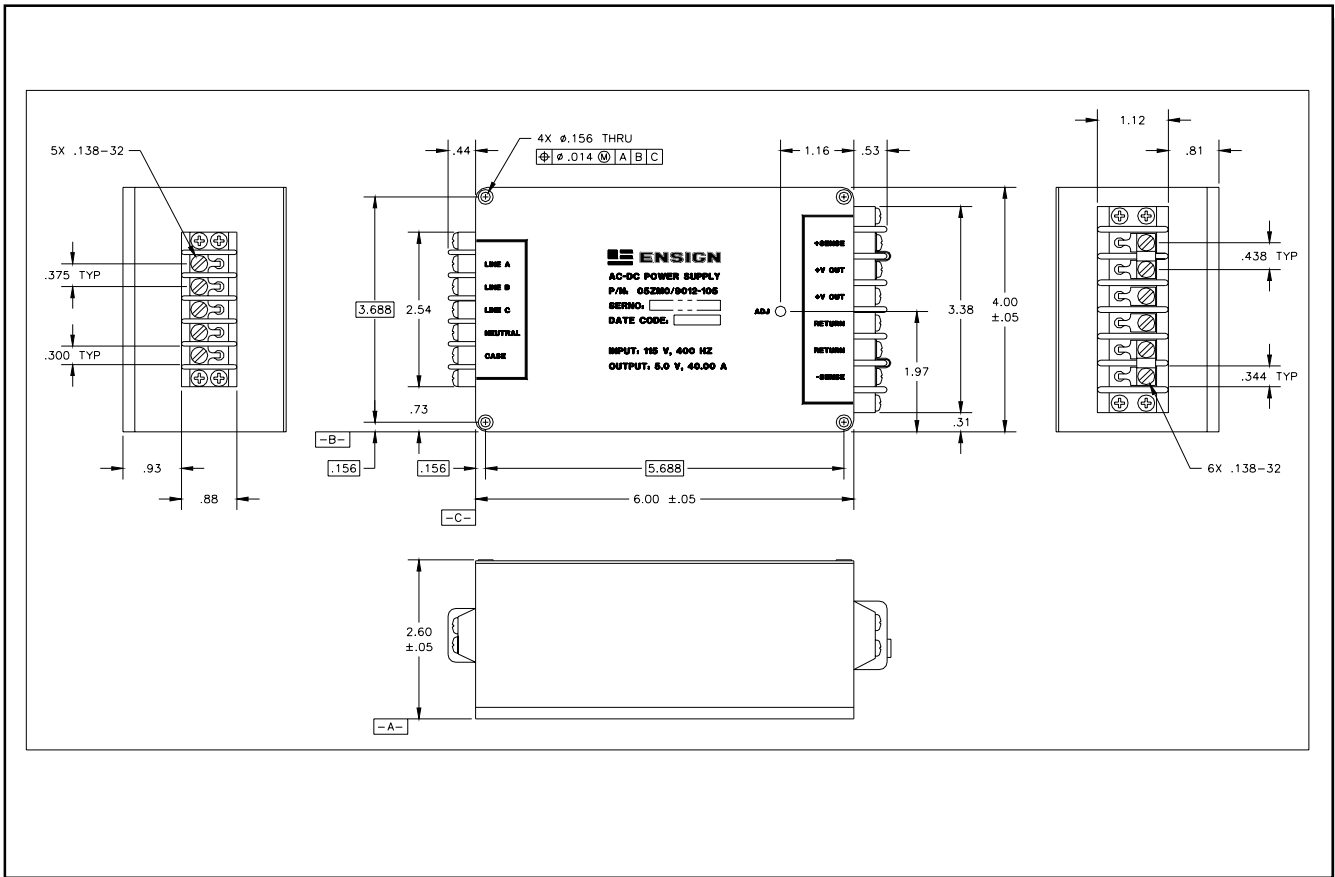
### PART NUMBER SELECTION GUIDE\*\*

PART NUMBER	OUTPUT VOLTAGE	OUTPUT CURRENT	EFFICIENCY
9012-105	5.0 VDC	40.0 A	73% Min.
9012-108	8.0 VDC	26.2 A	75% Min.
9012-112	12.0 VDC	19.2 A	79% Min.
9012-115	15.0 VDC	15.3 A	80% Min.
9012-128	28.0 VDC	8.9 A	83% Min.

\* Consult factory for detailed specification sheets.

\*\* Consult factory for other voltages and configurations.

## OUTLINE DIMENSIONS



**OPTIONS:** Consult factory for these and other options.

1. For voltages other than those listed or unique performance requirements.
2. For other interface connectors.
3. For detailed specification sheet, please contact the factory or our representative.
4. For restricted volume applications, the height can be reduced to 2.00 inches. Add H to part number.

## REPRESENTATIVES

Devon Marketing Company  
Contact: Rick Guertin

P.O. Box 778  
Devon, PA 19333-0778  
Phone: (610) 647-5552  
FAX: (610) 647-5553

Region(s): Massachusetts,  
Connecticut, Rhode Island, E.  
Pennsylvania, S. New Jersey,  
Maryland

Interactive Component Sales, Inc.  
Contact: Bob Roper

4645 Spring Canyon Heights #106  
Colorado Springs, CO 80907  
Phone: (719) 592-0345  
FAX: (719) 592-0350

Region(s): Texas, Florida

KM Communications, LLC  
Contacts: Lisa, Kasai, Glenn Mau

3001 Winchester Blvd. Suite #4  
Campbell, CA 95008  
Phone: (408) 379-1122  
FAX: (408) 879-2822

Region(s): Northern California,  
Northern Nevada

Ensign Power Systems, Inc.  
Contact: Bill Harris

510 East 5th Street  
Loveland, CO 80537  
Phone: (970) 203-9255  
FAX: (970) 203-9322

Region(s): All Others