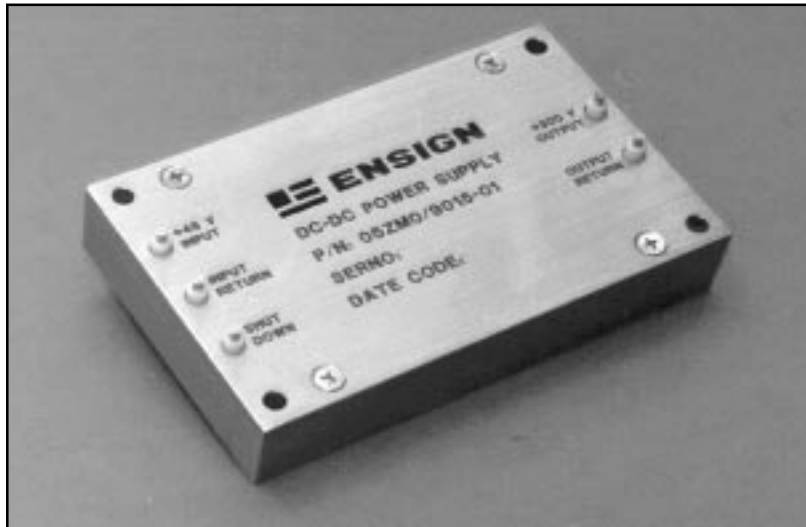


9015 SERIES

HIGH RELIABILITY POWER SUPPLY



50 WATTS OUTPUT POWER
 RUGGED ENVIRONMENTS
 TIGHT REGULATION
 0-70° C OPERATION
 100 KHZ FIXED FREQUENCY
 BASEPLATE COOLED

GENERAL SPECIFICATIONS*

INPUT VOLTAGE 42 to 60 VDC	REGULATION Line (42-60 VDC) 0.1% Max. Load (2% to FL) 0.1% Max. Temp. (0 to +70° C) +/-1.55% Max.
ISOLATION Input/Output 1000 VDC Input/Chassis 500 VDC Output/Chassis 500 VDC	RIPPLE & NOISE Vpk-pk (20 MHz BW) 0.5% Max.
ALTITUDE To 12,000 ft.	TEMPERATURE RANGE 0 to 70° Centigrade Base Plate
OVERCURRENT PROTECTION Continuous, Foldback at Short Circuit Automatic Recovery	CASE MATERIAL Aluminum
OUTPUT VOLTAGE ADJUSTMENT +/-10% by Potentiometer	WEIGHT 8 oz. Maximum

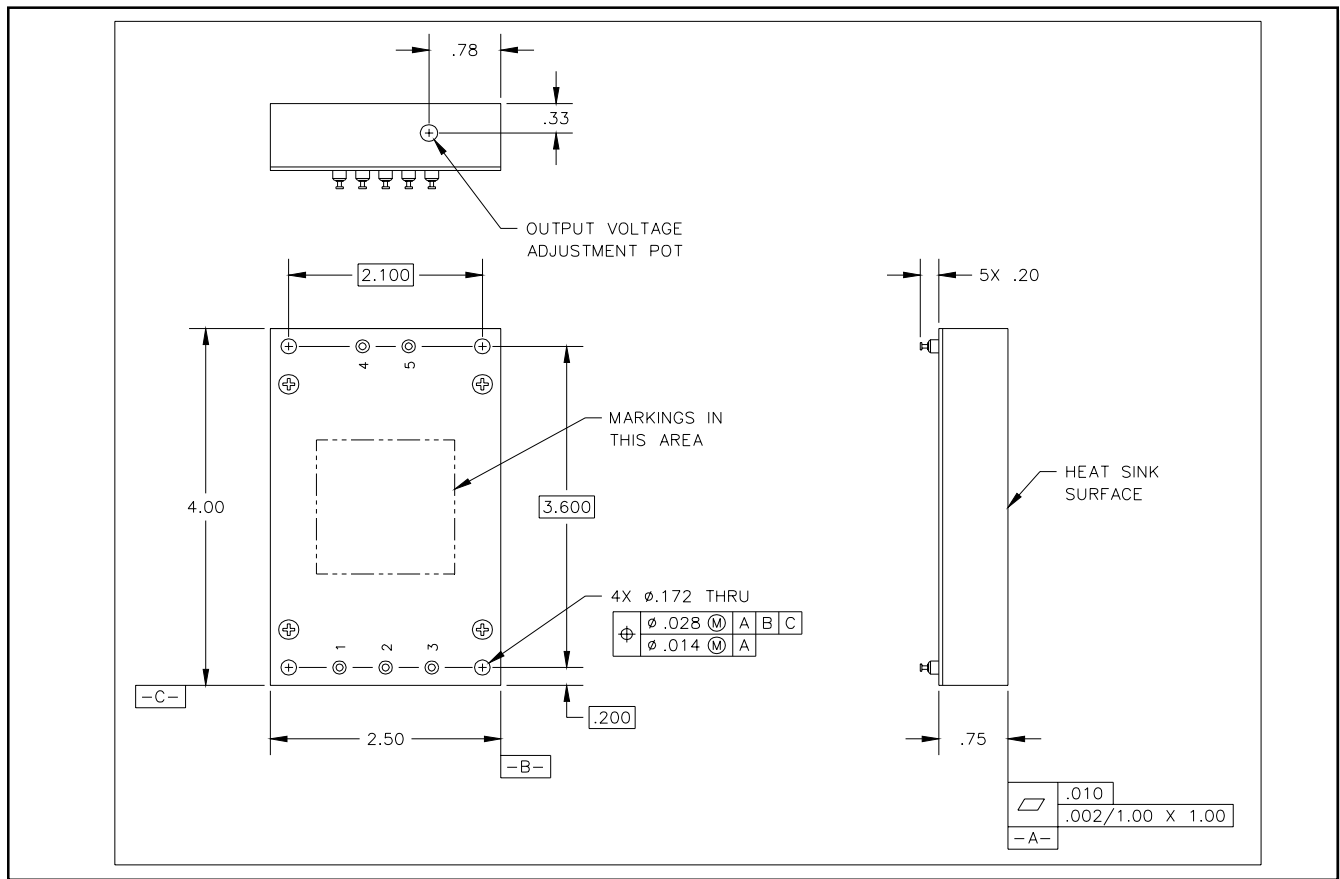
PART NUMBER SELECTION GUIDE**

PART NUMBER	OUTPUT VOLTAGE	OUTPUT CURRENT	EFFICIENCY
9015-01	300 VDC	167 mA	70% Min.

* Consult factory for detailed specification sheets.

** Consult factory for other voltages and configurations.

OUTLINE DIMENSIONS



OPTIONS: Consult factory for these and other options.

1. For input and/or output voltages other than those listed or unique performance requirements.
2. For other interface requirements.
3. For a detailed specification sheet, please contact the factory or our representative.

REPRESENTATIVES

Devon Marketing Company
Contact: Rick Guertin

P.O. Box 778
Devon, PA 19333-0778
Phone: (610) 647-5552
FAX: (610) 647-5553

Region(s): Massachusetts,
Connecticut, Rhode Island, E.
Pennsylvania, S. New Jersey,
Maryland

Interactive Component Sales, Inc.
Contact: Bob Roper

4645 Spring Canyon Heights #106
Colorado Springs, CO 80907
Phone: (719) 592-0345
FAX: (719) 592-0350

Region(s): Texas, Florida

KM Communications, LLC
Contacts: Lisa, Kasai, Glenn Mau

3001 Winchester Blvd. Suite #4
Campbell, CA 95008
Phone: (408) 379-1122
FAX: (408) 879-2822

Region(s): Northern California,
Northern Nevada

Ensign Power Systems, Inc.
Contact: Bill Harris

510 East 5th Street
Loveland, CO 80537
Phone: (970) 203-9255
FAX: (970) 203-9322

Region(s): All Others